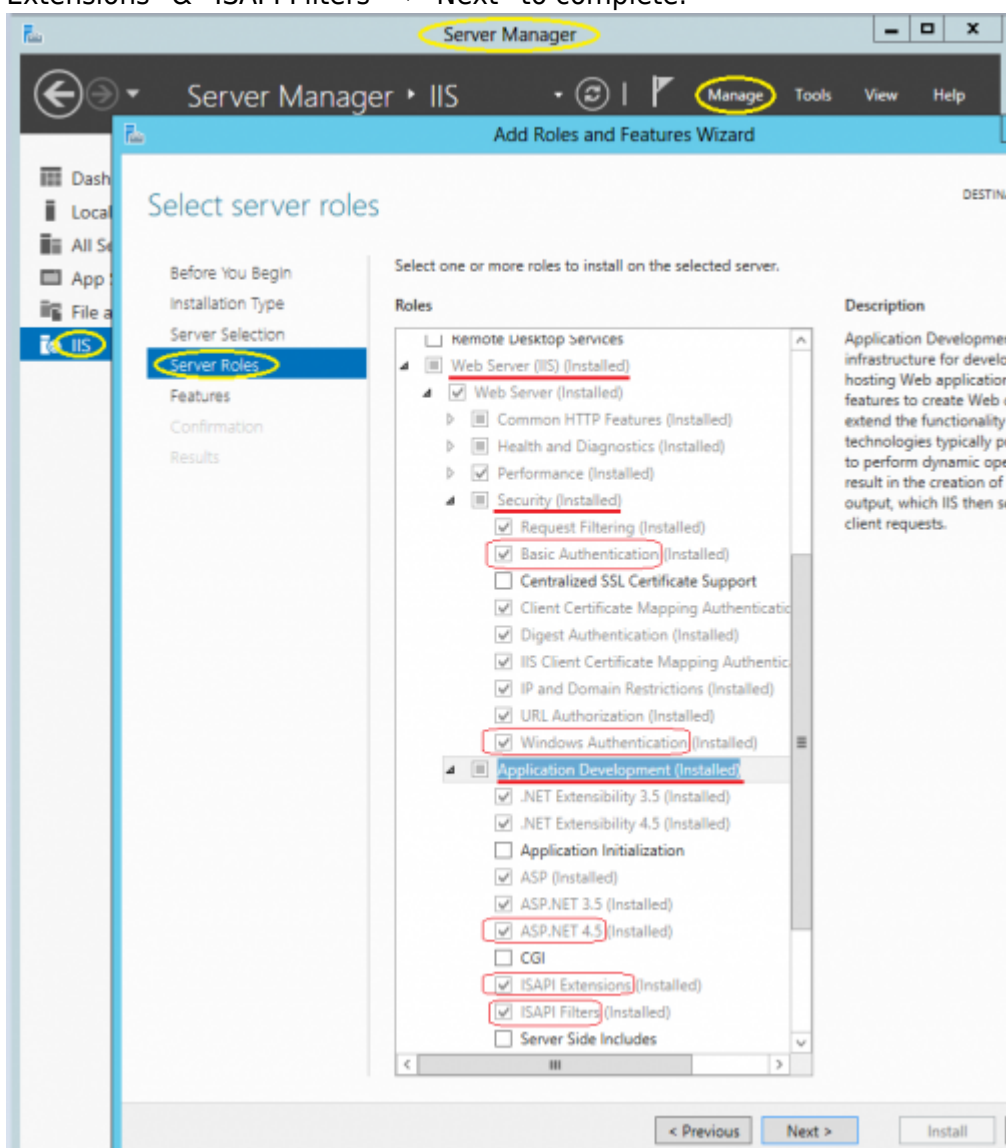


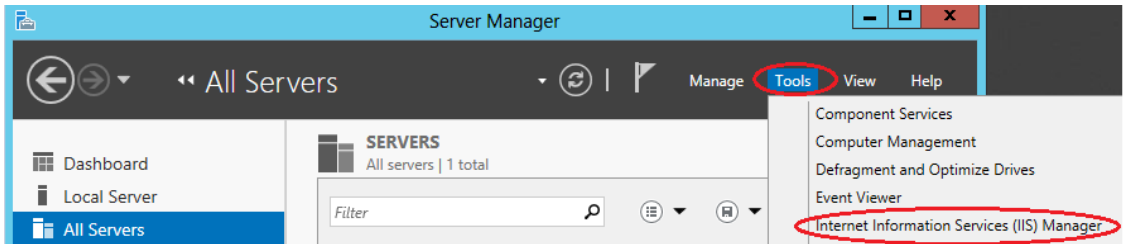
pcFinancials Installation Prerequisites Details

(Below screenshots are from Windows Server 2012)

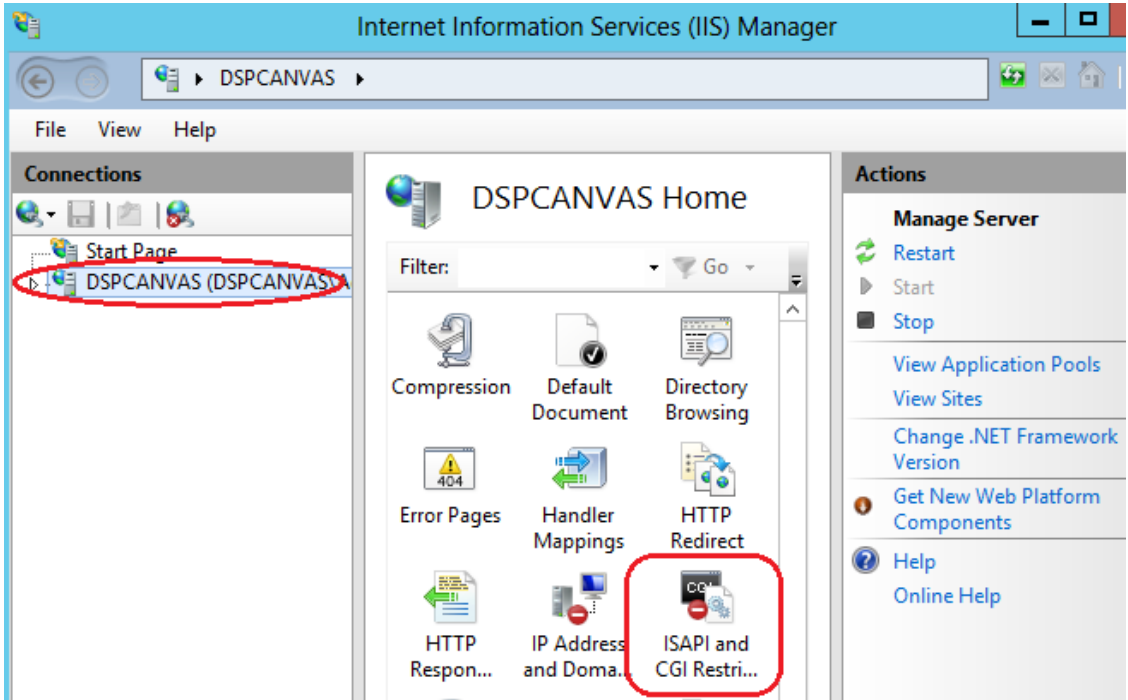
1. **Windows Server** 2008 R2 or later
 1. .NET 4.5 needs to be installed
(You can check whether it is installed from “Control Panel” → “Programs & Features”)
2. **Internet Information Server (IIS) 6** or higher
 1. IIS Windows login service needs to be started
 2. ASP.NET v4.0.30319 needs to be set to allowed on top level of default site and also ISAPI needs to be enabled then the necessary functionality will be available on IIS under the “ISAPI and CGI Restrictions”
 1. Tick “Basic Authentication”, “Windows Authentication”, “ASP.NET 4.5”, “ISAPI Extensions” & “ISAPI Filters” → “Next” to complete.



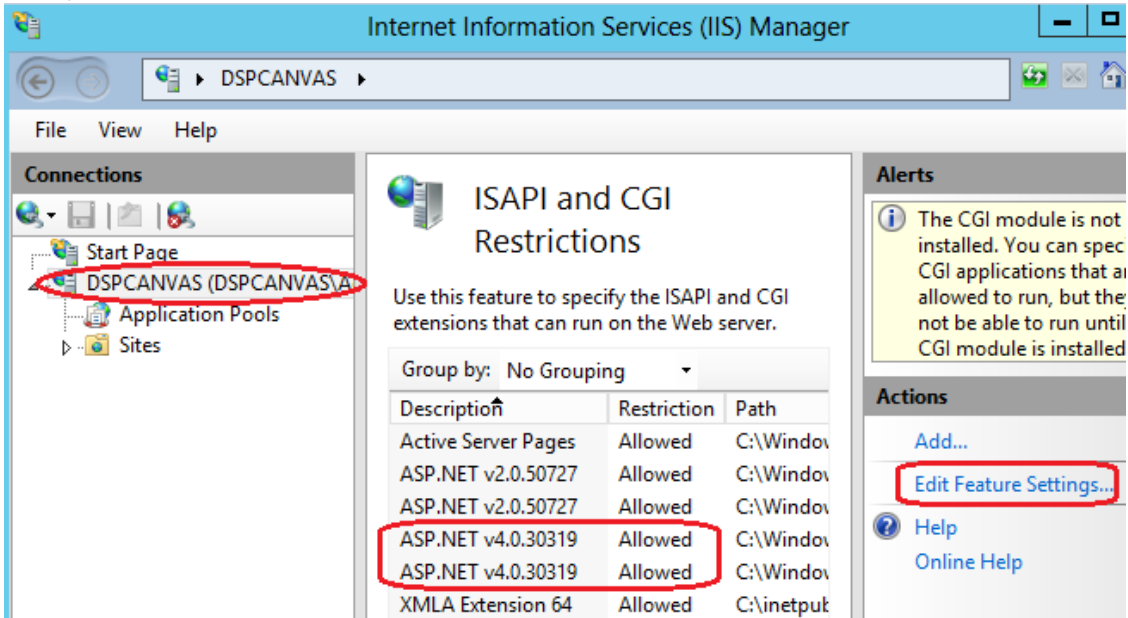
2. Go to IIS Manager.



3. Double click on "ISAP & CGI Restriction"

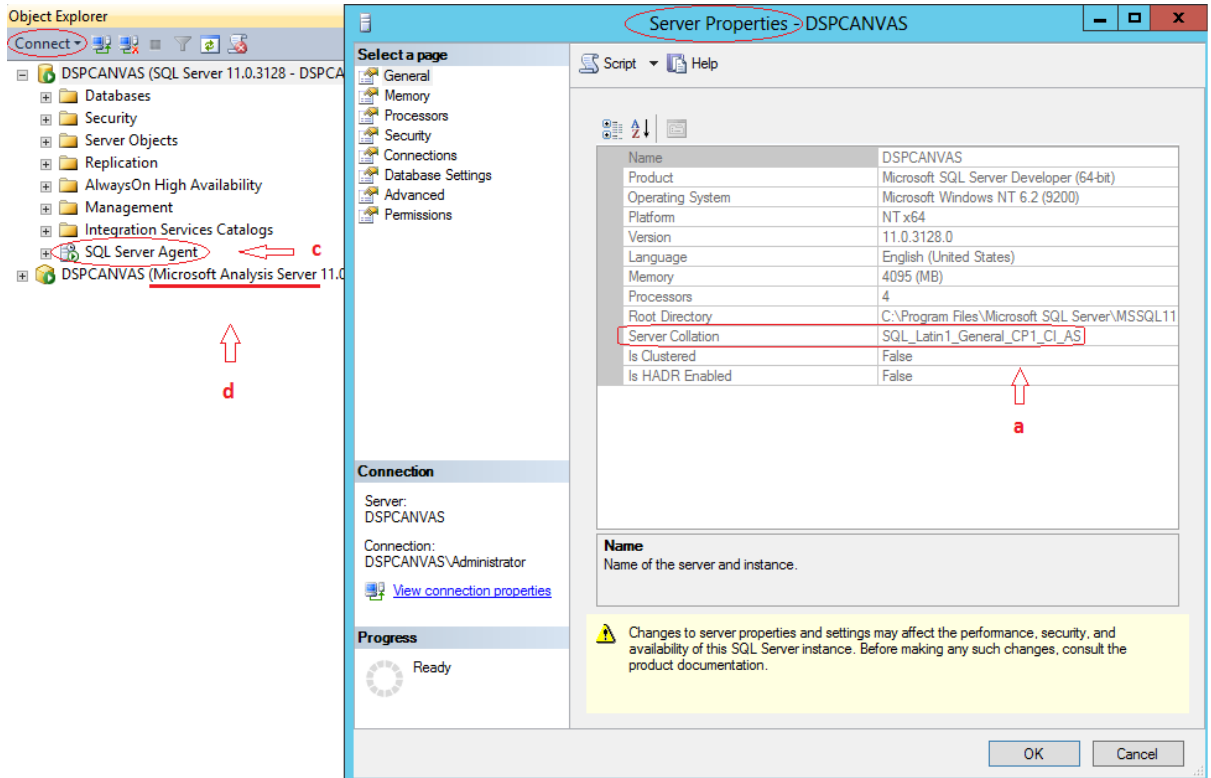


4. Verify "ASP.NET v4.0" are allowed.



3. Microsoft SQL Server 2008 R2 or higher

1. SQL Server needs to be installed with collation SQL_Latin1_General_CP1_CI_AS
2. If pcFinancials is installed on another server than where the ERP source system(E9, iScala or P21), the "ERP-server" must be set up as a linked server on the pcFinancials server.
3. SQL Server Agent needs to be started
4. SQL Server Analysis Services needs to be installed and started



- 4. A **64 bit system** is strongly recommended and the amount of free RAM available for the SQL server is the most important component to get acceptable performance. How much that is needed depends on the size of the databases.
- 5. **Local Administrator access** to the server.

From: <https://www.docu-pc.com/pc2/> - **Performance Canvas**

Permanent link: <https://www.docu-pc.com/pc2/doku.php?id=pcfinancials:tech:installguide:prerequisites>

Last update: **2015/07/20 08:36**

